

UMWELF



Garbage treatment system

2020 version



Only for more convenient and intelligent ship life



What is a Complete Dry Waste Handling System?

Processing waste is a time consuming, but important part of the modern marine industry. Making this work as efficient and logistically friendly as possible is our main concern.

Therefore, the equipment adopts movable containers to facilitate the handling material from one process to the next

Process example

Plastic cans and PET bottles are brought to the garbage processing room /location.

The container marked "Hard plastics" are rolled into the garbage grinder. Waste is loaded and processed into small strips in the grinder.

After processing is finished the container is rolled out of the grinder and directly into the compactor. A compaction cycle is run, to further compact the shredded waste.

The container is either left inside the compactor, or rolled back into a storage rack system on deck.

Garbage grinder



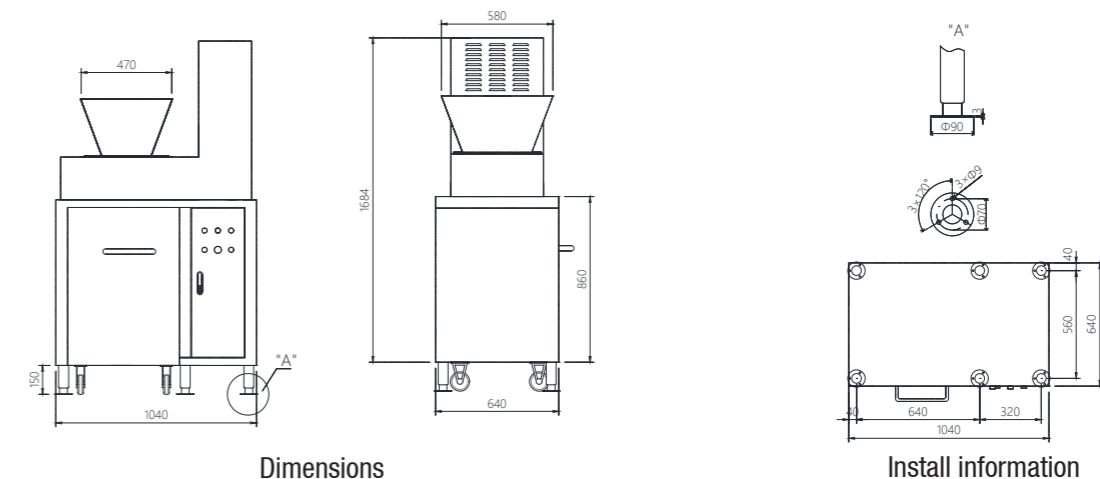
A garbage grinder's main task is to tear apart and reduce density of particular types of waste that is otherwise hard to compact efficiently. Examples are: PET Bottles, metal tins and cans, plastic containers, wood packaging materials etc. With a garbage grinder added to your waste handling system, and particularly in combination with a garbage compactor, you will end up with an extreme volume reduction

KEY BEBEFITS

- Stainless steel units for indoor or outdoor placement
- Wheeled interchangeable containers for easy waste segregation and logistics
- Products are verified by CE
- Powerful electro/mechanical low–speed shredding for high yield
- Discharged directly into s/s container for easy and safe deployment of waste
- Easy installation and operation
- Long life time, low service and maintenance requirements

SPECIFICATION

Model:	GG-D-SS-200
Material:	stainless steel 304 or 316
Capacity:	0.2m ³
Leading opening(W*H):	590*470mm
Dimensions(W*D*H):	1040*640*1800mm
Weight (incl. container):	400kg
Motor power:	3kW
Power:	AC 220V/380V/440V,60HZ,3PH
Shaft torque:	1336NM
Noise level:	<70dB



Dimensions

Install information



Garbage balers (top & side feeding)

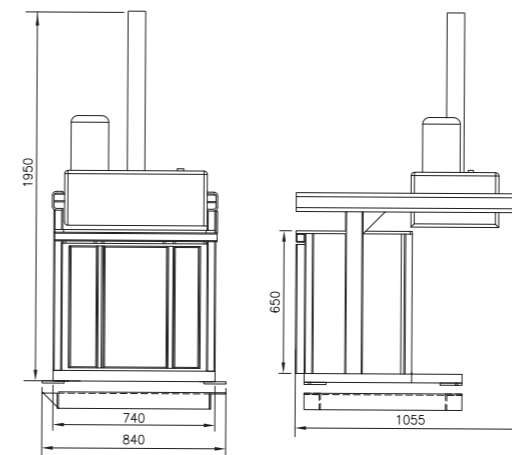
BG-E-T3 are designed with electro-hydraulic actuator system. These balers are oriented to facilities that handle small volume of soft waste including cardboard, paper, cans, bottles, rags, film and other soft packaging materials. They are ideal options for facilities like mall, retail stores, hotels, houses, grocery stores, offices, hospitals, marine and offshore. These balers are featured with small footprint and low height. They are good choice for locations with height and space limitations. Can be customized according to customer requirements greater pressure (up to 4t), can also be changed to pneumatic form according to requirements

KEY BEBEFITS

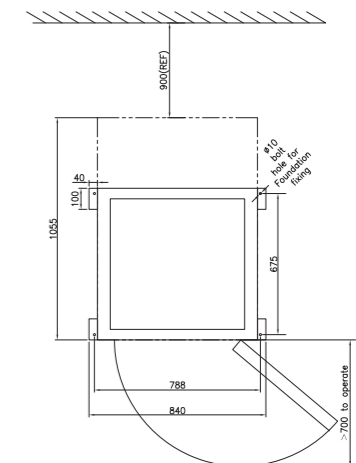
- Top feeding & side feeding design, compact structure
- Useful for recycling waste paper and plastic bottles
- Products are verified by CE

SPECIFICATION

Model	BG-E-T3
Matreial	Carbon steel
Pressure	3t (other pressue can be customized, up to 5t)
Motor voltage	110V, 1 Ph, 60Hz ; 220V, 1 Ph, 50/60Hz
Motor power	0.75Kw
Bale size(WxDxH)	650 x 450 x 845mm (other size can be customized)
Bale weight	20-50kg (flexible)
Ram storke	600mm
Alternative power supply	Electric/Hydrauhc
Machine size	840x1055x1950mm
Weight	300Kg
Noise level	<70dB



Dimensions



Install information

Garbage balers (side feeding)



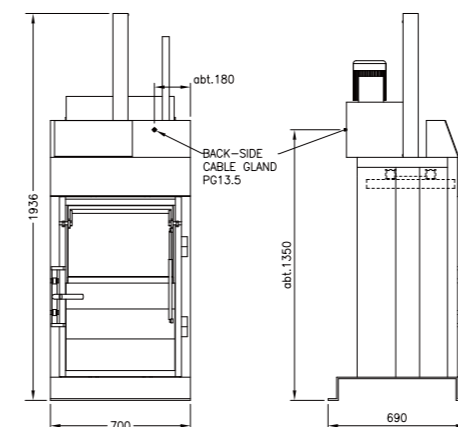
BG-E-T3C are designed with electro-hydraulic actuator system. These balers are oriented to facilities that handle small volume of soft waste including cardboard, paper, cans, bottles, rags, film and other soft packaging materials. They are ideal options for facilities like mall, retail stores, hotels, houses, grocery stores, offices, hospitals, marine and offshore. These balers are featured with small footprint and low height. They are good choice for locations with height and space limitations. Can be customized according to customer requirements greater pressure (up to 4t), can also be changed to pneumatic form according to requirements

KEY BEBEFITS

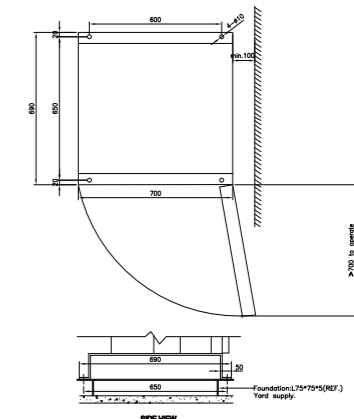
- Packing mechanism for operation convenience
- Safety switches on the door
- Convenient to pack
- Unique ram design
- Humane door design, easy to feed
- Advanced and enduring hydraulic system from Taiwan
- Products are verified by CE

SPECIFICATION

Model	BG-E-T3C
Matreial	Carbon steel
Pressure	3t (other pressue can be customized, up to 5t)
Motor voltage	110V, 1 Ph, 60Hz ; 220V, 1 Ph, 50/60Hz
Motor power	0.75 Kw
Bale size(WxDxH)	600 x 470 x 900mm (other size can be customized)
Bale weight	20-40kg (flexible)
Ram storke	600mm
Altemric power supply	Electric/Hydrauhc
Machine size	700x690x1936mm
Weight	300Kg
Noise level	< 70dB



Dimensions



Install information

Garbage disposal



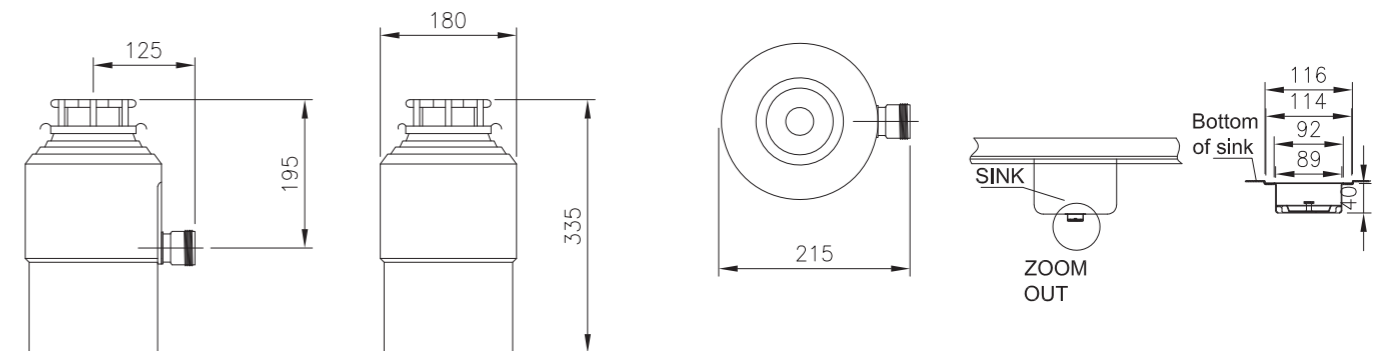
- Easy to install design, easy to adapt to various types of pool
- Disposer mounting included with unit. Mounting fits standard 3.5" – 4" (88.9 mm – 101.6 mm) sink opening. No welding required.
- Standard wall switch operates the disposer
- Automatic reversing motor for longer life and trouble-free operation
- Cast nickel chrome cutting element
- Continuous-duty commercial motor

KEY BEBEFITS

- System protection – The automatic overload system protects the motor from damage if the grinder becomes jammed.
- Simple controls – Simple to use, waterproof IP65 controls can be integral, wall mounted.
- A range of mounting assemblies/models for mounting into sinks, washing lines, working benches or as free-standing units.
- Meeting to MARPOL 73/78; Annex V(Including Amendemts)

SPECIFICATION

Model:	LC-50
Capacity:	150kg/h
Variable range:	140/160/180mm
Motor power	0.63kW
Power	110V, 1 Ph, 60Hz ; 220V, 1 Ph, 50/60Hz
Grinding chamber Material:	High density alloy



Dimensions

Install information

Garbage disposal



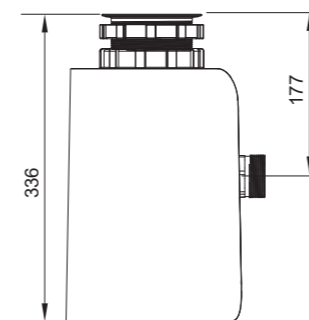
- Easy to install design, easy to adapt to various types of pool
- Disposer mounting included with unit. Mounting fits standard 3.5" – 4" (88.9 mm – 101.6 mm) sink opening. No welding required.
- Standard wall switch operates the disposer
- Automatic reversing motor for longer life and trouble-free operation
- Cast nickel chrome cutting element
- Continuous-duty commercial motor

KEY BEBEFITS

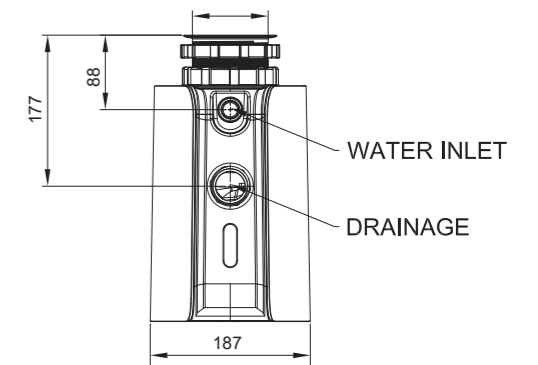
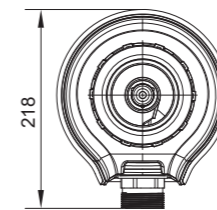
- System protection – The automatic overload system protects the motor from damage if the grinder becomes jammed.
- Simple controls – Simple to use, waterproof IP65 controls can be integral, wall mounted.
- A range of mounting assemblies/models for mounting into sinks, washing lines, working benches or as free-standing units.
- Meeting to MARPOL 73/78; Annex V(Including Amendemts)

SPECIFICATION

Model:	SS-100
Capacity:	300kg/h
Variable range:	140/160/180mm
Motor power	0.8kW
Power	110V, 1 Ph, 60Hz ; 220V, 1 Ph, 50/60Hz
Grinding chamber Material:	High density alloy



Dimensions



Install information

Independent garbage disposal with cabinet



- All stainless steel structure
- S/S cabinet ,with built in solenoid valve to prevent misoperation
- Self provided switch, no need for wall switch
- Automatic reversing motor for longer life and trouble-free operation
- Cast nickel chrome cutting element
- Continuous-duty commercial motor
- Marine adjustable flange feet

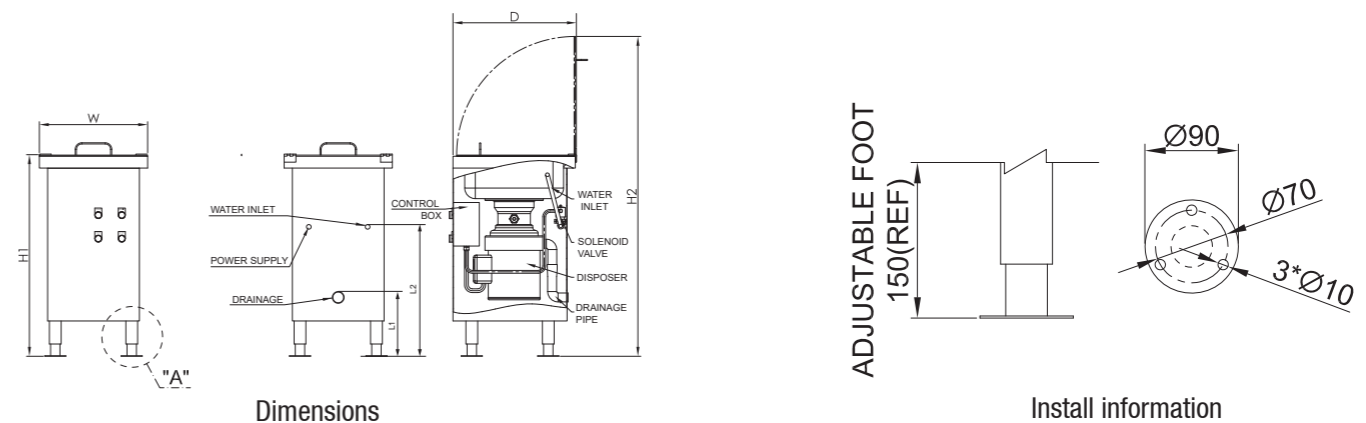
KEY BEBEFITS

- System protection – The automatic overload system protects the motor from damage if the grinder becomes jammed.
- Simple controls – Simple to use, waterproof IP65 controls can be integral.
- High power motor specially designed for commercial use has better durability and reliability
- Meeting to MARPOL 73/78; Annex V(Including Amendemts)

SPECIFICATION

Model:	SS-100-C	SS-200-C
Capacity:	300kg/h	600kg/h
Size :	460*520*860mm	460*520*860mm
Motor power	0.8kW	1.8kW
Power	110V, 1 Ph, 60Hz ; 220V, 1 Ph, 50/60Hz	110V, 1 Ph, 60Hz ; 220V, 1 Ph, 50/60Hz
Grinding chamber Material:	High density alloy	High density alloy

Model	W (mm)	D (mm)	H1 (mm)	H2 (mm)	L1 (mm)	L2 (mm)
SS-100-C	460	520	860	1360	250	550
SS-200-C	460	520	860	1360	250	550





ISTITUTO SERVIZI EUROPEI TECNOLOGICI

ISET S.r.l.

Sede Legale e Uffici
Via Donatori di sangue, 9 - 46024 Moglia (MN)
Tel. e fax +39 (0)376 598963
iset@iset-italia.com www.iset-italia.eu

Cap. soc. i.v. € 10.200,00
Cod. Fisc. e P.IVA 02 332 750 369
Reg. Imprese 02 332 750 369
REA MN 0221098

CERTIFICATE OF COMPLIANCE

Certificado de Conformidade - Сертификат соответствия - Konformitätserklärung

1) APPLICANT:

FLOERINER GMBH
Rödingsmarkt 20, 20459 Hamburg

MANUFACTURER:

Floeriner (China) Co., Ltd
16F, Pingan Fortune Center Binhu District, Wuxi City, China

2) CERTIFICATE NO.:

IT1313FR12101801

TCF(S) NO.:

FXE-2018-10-06

3) WITH REFERENCE TO EC DIRECTIVE APPLIED:

Machinery Directive 2006/42/EC

HARMONIZED STANDARDS APPLIED:

EN ISO 12100:2010,
EN 60204-1:2006+A1:2009+AC:2010,
EN 16500:2014

4) CERTIFICATION ISET MARK:



5) PRODUCT CHARACTERISTICS: UMWELF Garbage Treatment System

MODEL(S): Garbage Baler: BG, BG-T, BG-EH-T, BG-P-T, BG-E-T, BG-SS-T, BG-EH-SS-T, BG-P-SS-T, BG-E-SS-T
Garbage Grinder: GG, GG-D, GG-W, GG-SS, GG-D-SS, GG-W-SS
Glass Bottle Grinder: GBG, GBG-SS
Garbage Disposal

REMARK: The verification has been carried out on a voluntary basis. We attest that a TCF is in place. The product(s) satisfies the requirements of the Certification Mark of ISET, in reference to the above list standard(s). The above compliance mark can be fixed on the product(s) according to the ISET regulation about its release. This verification doesn't imply assessment of the production and the product(s).



Notice of the CE marking: The label of the CE marking: Not less than 5mm height. Before putting the product(s) into market, CE marking and EC declaration are duties of the manufacturer. The manufacturer is responsible to start the CE marking certification procedure and to perform all the activities according to the Directive.

6) DATE OF ISSUE: 12/10/2018

DATE OF EXPIRE: 11/10/2023

CERTIFICATION MANAGER:



UMWELF

USA

3012 via victoria, Palos Verdes Estates
linkman: benjamin jiang
Mobilephone: +1-206-498-3955

GERMANY

Rödingsmarkt 20, 20459 Hamburg, Germany.
linkman: Hans Hartmann
Mobilephone: +49 0152 0752 2303
Email: info@floeriner.de

CHINA

中国 无锡 滨湖区 平安财富中心 16楼
linkman: Amy Shen
phone: +86 0510-85609386
Email: sales@floeriner.de

SPAIN

Avda. Constitución 85 Portal 5 Piso 1º Oficina 828823 Coslada España
linkman: Antonio Vidal
Mobilephone: +34 722 425 109

JAPAN

〒462-0844 名古屋市北区清水1丁目22-17
linkman: 弓长龙平
phone: +81 090 1985 9372

